

All information described in this manual is based on the test standard of Takeway®. Sorry for the inconvenience caused if there are any printing errors. The design and specifications of this product are subject to change without notice.

Copyright: All Rights Reserved



### EHOMA INDUSTRIAL CORPORATION

TEL: +886-4-2406 5031  
info@takeway.tw  
www.takeway.tw

215xxx/EN 12/2024

# T-PH05 MANUAL

## Phone Holder

Before using the product for the first time, please read through the user guide. Please use this product correctly after fully understanding the contents of the user guide.

T-PH05 Phone holder can combine with the Takeway® Clampod, Clamping Arm with Ballhead Base or Fork Stem Phone Mount.

2

Installation of pads for both upper & lower sleeve corners

### 2-1: Installation of pads for both upper and lower sleeve corners :

Align the long edge of a pad with the long V-shaped edge of one sleeve and hold with one finger. Use the finger to gently push the pad's edge toward the aligned sleeve edge. The installation is finished when you hear a click, and the pad completely sits in the sleeve. Repeat the procedure for the other sleeve.

### 2-2: Installation of the damping foam:

The user can decide whether to use the damping foam or not, based on the phone case's thickness. Take off the releasing paper on **a** the damping foam (Figure 2). Place the combined piece on the phone holder bed.

Fig. 1

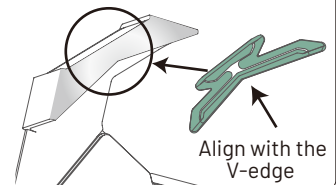


Fig. 2

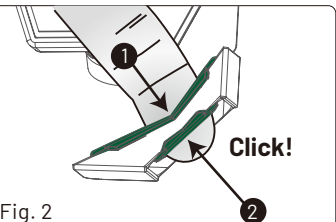
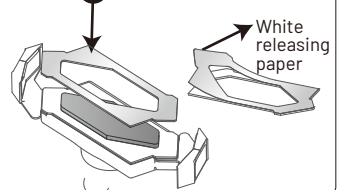
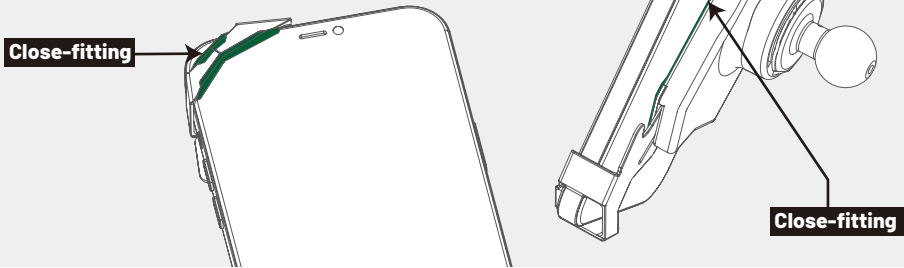


Fig. 3 **a** Thick damping foam



### Attention!

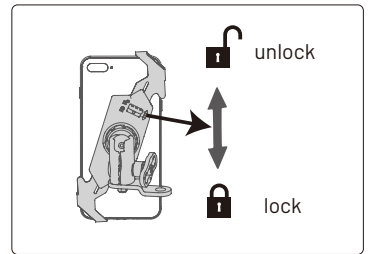
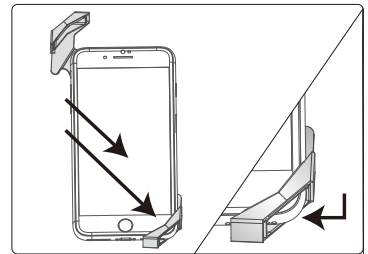
The pads of sleeve corners and damping foams are NOT necessary to install. It depends on your phone thickness including the phone case. The most important is to make sure your smartphone seated **closely into the phone holder** before any further operation. A vacant space may increase the damage risk when riding and using the phone holder.



## 2

### Installation of the phone holder

Install the phone holder and adjust the holder to get a desired angle. Tighten clamping arms by swiveling the anti-theft handle and make sure the phone holder is fixed at the desired angle. Move the disc base forward or backward to adjust its position for a proper angle, and make sure it does not block you from holding the hand clutch.



Note: When using the smart security lock, please do not put your finger between the clamping jaws (silver components) to avoid injury to your finger or compromise of the clamping strength.