

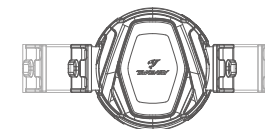
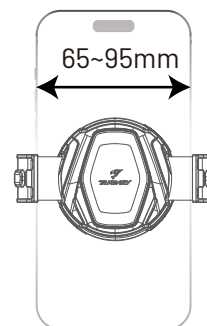
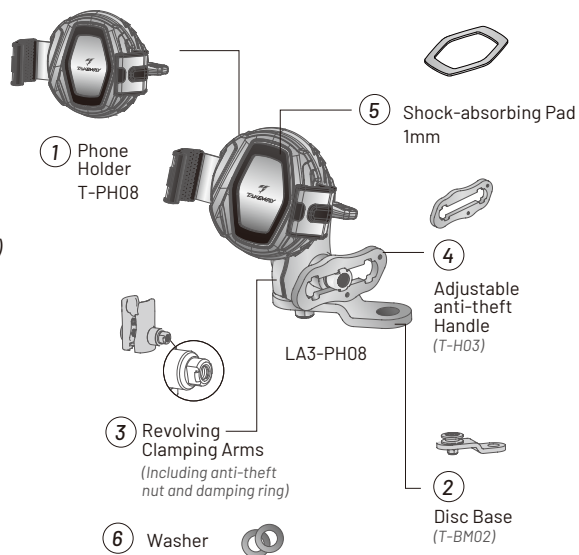
1

Contents

Contents:

Damping foam x 2, Auxiliary installation pad x 1, Pad for sleeve corners x 2. The user can decide whether to use these accessories, based on the thickness of the phone case.

- ① Phone Holder. (T-PH08)
- ② Disc Base (T-BM02)
- ③ Revolving Clamping Arms. (Including anti-theft nut and damping ring)
- ④ Adjustable Anti-theft Handle. (T-H03)
- ⑤ Shock-absorbing Pad (1mm)
- ⑥ Washer.

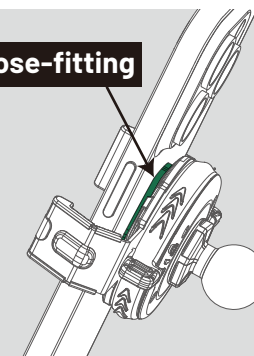


Fits mobile phones (with case)
9mm to 15mm thick

Attention!

The shock-absorbing pad are NOT necessary to install. It depends on your phone thickness including the phone case. The most important is to make sure your smartphone seated **CLOSELY INTO THE PHONE HOLDER** before any further operation. A vacant space may increase the damage risk when riding and using the phone holder.

Close-fitting

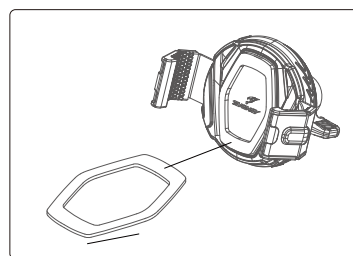


2

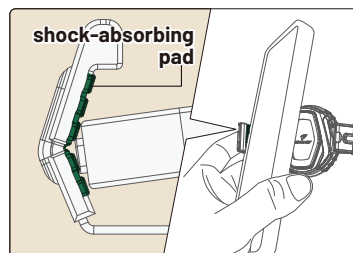
Installation of the shock-absorbing pad:

2-1 Installation of the shock-absorbing pad:

The user can decide whether to use the shock-absorbing pad or not, based on the phone case's thickness. Take off the releasing paper on the shock-absorbing pad. Place the combined piece on the phone holder bed.



Ensure your phone is placed within the grooved rubber padding area of the jaws.



3

Use of the adjustable anti-theft handle

3.1. Installation

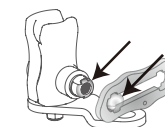
Aim the cross-shaped hole at either end of **b** the adjustable anti-theft handle at **a** the anti-theft nut. Hook the handle to the nut. Move the handle so that the nut will be positioned in the handle's track. The handle is ready for use.

Swivel the handle clockwise to tighten the nut or counterclockwise to unscrew it for adjusting the phone holder's angle.

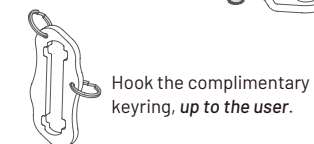
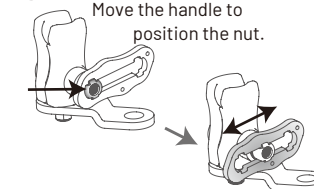
3.2. Anti-theft function

Move the handle so that either cross-shaped hole of the handle will match the cross shape on the nut. Lift the anti-theft handle for retreat. The user can choose to hook the complimentary keyring in the product package to either pinhole on the handle for easy keeping.

- a** Aim the cross-shaped hole at the nut.



- b** Hook the handle to the nut. Move the handle to position the nut.



Hook the complimentary keyring, up to the user.

Step 1.

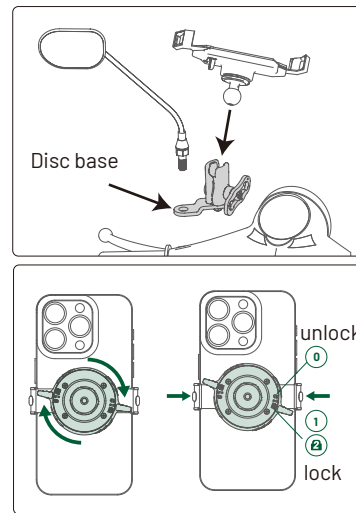
Loosen up the nut of the rearview mirror and keep turning the mirror until you can take it off. Insert the ball mount of LA3-PH08 into the dismantled rearview mirror and screw the mirror back to the motorcycle. You can adjust the angle of the phone holder using the knob on the bracket.

Please check the curve between the dashboard and the rearview mirror base and adjust the ball mount accordingly to get a proper angle (front/rear). If your rearview mirror base has a 8 mm screw, please use the enclosed 8 mm washer for mounting.

Step 2.**Mounting the Phone**

Insert your phone into the holder. Push it against the right jaw and apply pressure to the right. The both jaws will open symmetrically. Once the phone is positioned, release the holder to secure it in place. Rotate the rear safety lock to Position 1 to lock the phone in place. For additional security, rotate the safety lock to Position 2, applying extra pressure for a firm hold.

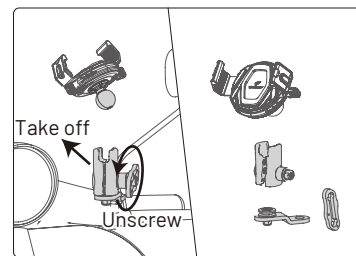
Note: When using the smart security lock, please do not put your finger between the clamping jaws (silver components) to avoid injury to your finger or compromise of the clamping strength.

**5.1. Quick release of the phone holder.**

Use the anti-theft handle to loosen the clamping arms and take off the phone holder. Remove the handle for basic anti-theft function.

5.2. Advanced anti-theft function.

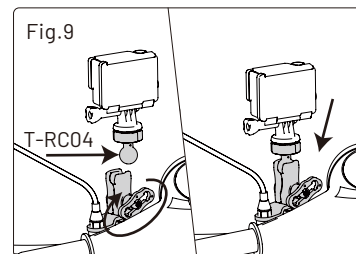
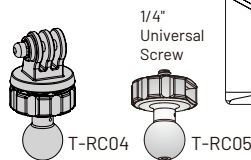
After taking off the phone holder, continue to unscrew the nut using the anti-theft handle. When the two clamping arms are about one thumb apart, gently press the top of the clamping arms to remove the set.

5.3. Keep the phone holder and the clamping arms in a safe place.

Loosen the clamping arms and take off the phone holder (Figure 9). Add a quick-release ballhead at the bottom of the action camera. Mount the ballhead onto the clamping arms. Adjust the angle and use the anti-theft handle to tighten the clamping arms.

※ Optional accessory: T-RC04

※ Optional accessory T-RC05



7.1. Before setting the security lock, use one hand to pull down the lower sleeve corner to check whether the gliding is smooth.

7.2. Fasten the security lock, while keeping the sleeve corners open. Check whether the extended sleeve corners are firmly fixed and do not glide.

7.3. Unfasten the security lock. The sleeve corners will automatically return to their original positions.

* Inappropriate testing and use might damage the phone holder structure. Any damage due to this inappropriate handling is not covered by the standard limited warranty.

* If you have any concerns about the product use, please stop using it immediately and contact our customer service.

Customer Service E-Mail:
info@takeway.tw

The standard limited warranty is valid for one year, from the original date of purchase for a consumer or a private purchaser (the warranty covers only the primary phone holder and does not include the attached accessories).

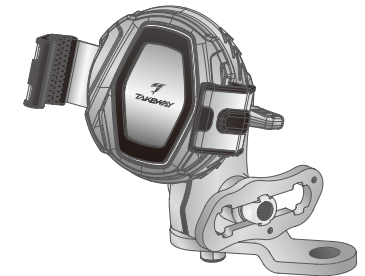
Please be aware of this condition and use the phone holder at your discretion.

This product is covered by product liability insurance. However, any personal injury and property damage caused by misuse of and physical abuse to the product is not covered, and Takeway® takes no responsibility for such injury and damage.

Please carefully read the product manual and correctly use the phone holder.

⚠ WARNINGS

This product is designed to reduce the vibration's impact on the smartphone. However, it does not function as optical image stabilization and cannot completely eliminate the vibration's impact on the optical lens.
Please be aware of this condition and use the phone holder at your discretion.



LA3-PH08 MANUAL

Phone Holder

Before using the product for the first time, please read through the user guide.

Please use this product correctly after fully understanding the contents of the user guide.

All information described in this user guide is based on the test standard of Takeway®. Sorry for the inconvenience caused if there are any errors. The design and specifications of this product are subject to change without notice.

*Patented product,
counterfeiting not allowed*

EHOMA INDUSTRIAL CORPORATION

TEL: +886-4-2406 5031

info@takeway.tw

www.takewayglobal.com