

**1 Please test the relevant components and read the user guide before using this product**

Before using this product on your consumer electronic devices, please check the product and its accessories for damage or deformation. If there are any defects, please contact the salesperson to exchange your product. A properly functioning product prevents damage to your consumer electronic devices or personal injury caused by the faulty product. Takeway® takes no responsibility and assumes no liability for the loss or inconvenience caused by the user's own negligence.

**2 Simple functional testing**

Inappropriate testing and use might damage the phone holder structure. Any damage due to this inappropriate handling is not covered by the standard limited warranty.

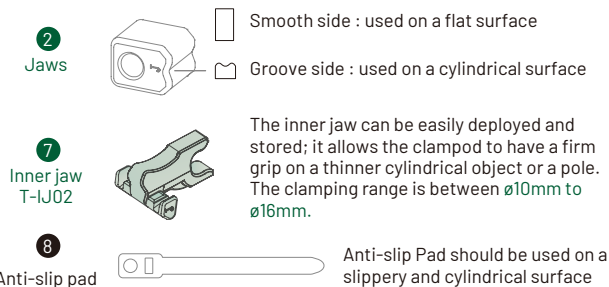
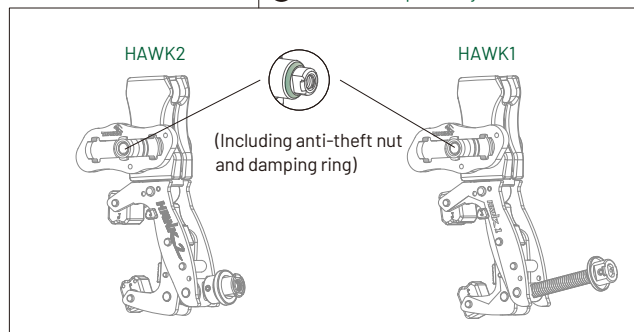
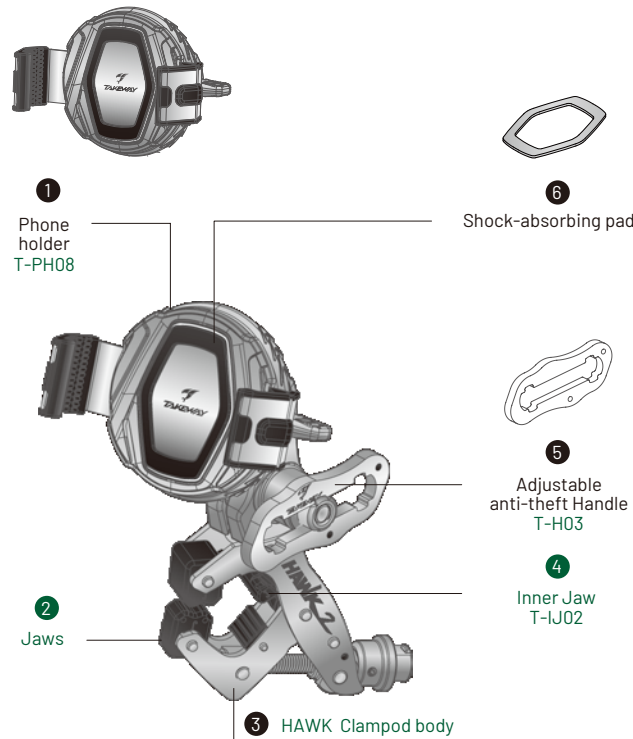
- 2-1. Before setting the security lock, use one hand to pull down the lower sleeve corner to check whether the gliding is smooth.
- 2-2. Fasten the security lock, while keeping the sleeve corners open. Check whether the extended sleeve corners are firmly fixed and do not glide.
- 2-3. Unfasten the security lock. The sleeve corners will automatically return to their original positions.

\* If you have any concerns about the product use, please stop using it immediately and contact our customer service. Customer Service E-Mail: [info@takeway.tw](mailto:info@takeway.tw)

**3 Operating Instructions**

- 3-1: When clamping the HAWK1 on a smooth cylindrical surface, place the anti-slip pad between the surface and the clampod to increase grip.
- 3-2: The body of the clamp is made of aluminum alloys and in general free from rust. However, to avoid the product being damaged, do not keep the product in a humid environment over a long period of time.
- 3-3: Do not use or store the product near heat or an open flame, which will damage the plastic components.
- 3-4: If the product has not been used for a long time, please check the components and make sure they function properly, before mounting any devices. This might prevent the device from getting loose and falling during mounting.
- 3-5: Please follow the installation instructions below when using this product. First, clamp and fix HAWK1 on a chosen object. Every time before using, make sure that your electronic device is securely mounted and the clampod grips tightly on the clamped object to prevent your device from falling and getting damaged.
- 3-6: When using or storing HAWK1, make sure that the jaws do not clasp something sharp as doing so may damage the jaws
- 3-7: When the clampod jaws are opened to the max. width of 32mm, DO NOT FURTHER TURN THE HANDLE, otherwise, the clampod might be damaged. Takeway® takes no responsibility for the damage caused by this incorrect installation.

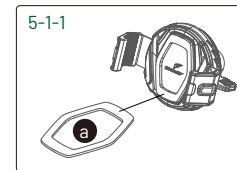
**4 List of Components**



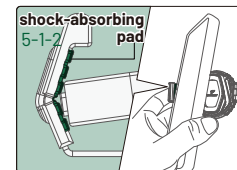
**5 Installation of Pads for Sleeve Corners & Damping Foams**

**5-1: Installation of the shock-absorbing pad:**

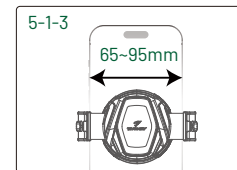
5-1-1: The user can decide whether to use the shock-absorbing pad or not, based on the phone case's thickness. Take off the releasing paper on the shock-absorbing pad. Place the combined piece on the phone holder bed.



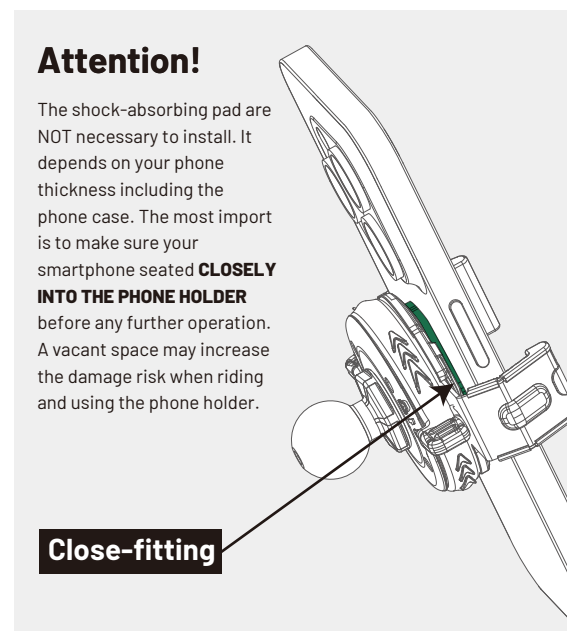
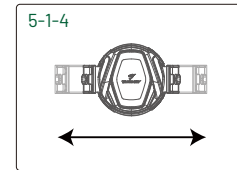
5-1-2: Ensure your phone is placed within the grooved rubber padding area of the jaws.



5-1-3: Widths mobile phones (with case) 65mm to 95mm wide



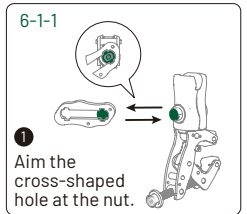
5-1-4: Fits mobile phones (with case) 9mm to 15mm thick



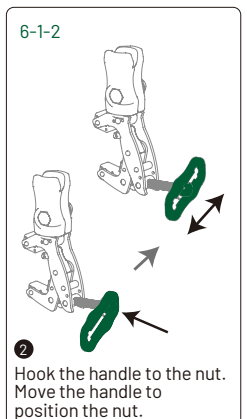
**6 Clampod Installation and use of the adjustable anti-theft handle**

**6-1: Installation**

6-1-1: Aim the cross-shaped hole at either end of the adjustable anti-theft handle at the anti-theft nut. Hook the handle to the nut. Move the handle so that the nut will be positioned in the middle of handle. The handle is ready for use.  
 Swivel the handle clockwise to tighten the nut or counterclockwise to unscrew it for adjusting the angle.

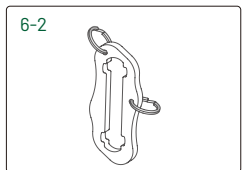


6-1-2: Aim the cross-shaped hole at the nut. Hook the complimentary keyring, up to the user.



**6-2: Anti-theft function**

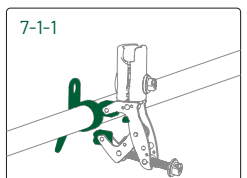
Move the handle so that either cross-shaped hole of the handle will match the cross shape on the nut. Lift the anti-theft handle for retreat.  
 The user can choose to hook the complimentary keyring in the product package to either pinhole on the handle for easy keeping.



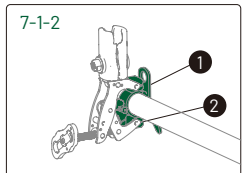
**7 Assembly and Use**

**7-1: Anti-slip pad assembly, disassembly, and storage**

7-1-1: Using an anti-slip pad before clamping can ensure HAWK 1 stability and prevent the clampod from sliding.

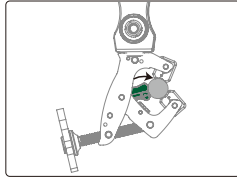


7-1-2: Wrap the anti-slip pad around a smooth cylindrical object. Then use the cubic jaws to clamp the anti-slip pad to improve the grip.



**7-2: Use of Inner Jaw**

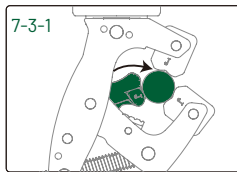
HAWK 1 is installed with an inner jaw during the manufacturing process; please do not remove it from the clampod unless necessary. Using the inner jaw can make clamping on small tubes Ø10-16 mm mm more convenient and secure.



**7-3: Clamping Range**

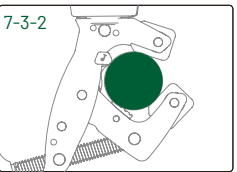
**7-3-1: Clamp onto a small cylindrical**

Clamping range: Ø 10-16 mm . The jaws and the inner jaw to make a "3 point clamping".



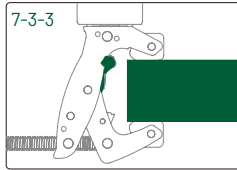
**7-3-2: Clamp onto a large cylindrical**

Clamping range: Ø17-Ø32mm, The inner jaw should be in its stationed position. Use the whole clamp body to wrap the object



**7-3-3: Clamp onto a board/plate**

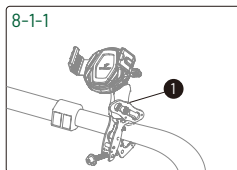
Clamping range: thickness 1-32mm board or plate. The inner jaw should be in its stationed position.



**8 Mounting the Phone**

**8-1: Installation of the holder**

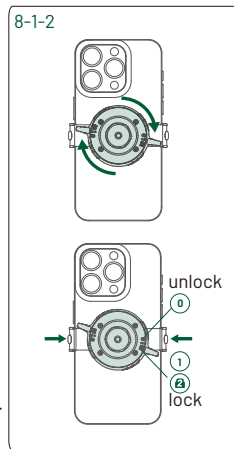
8-1-1: Mount T-PH08 to HAWK 1 and tighten clamping arms by swiveling the anti-theft handle to make sure the phone holder is fixed at the desired angle. Move the disc base forward or backward to adjust its position for a proper angle.



Note: When using the smart security lock, please do not put your finger between the clamping jaws (silver components) to avoid injury to your finger or compromise of the clamping strength.

**8-1-2: Mounting the Phone**

Insert your phone into the holder. Push it against the right jaw and apply pressure to the right. The both jaws will open symmetrically. Once the phone is positioned, release the holder to secure it in place. Rotate the rear safety lock to Position 1 to lock the phone in place. For additional security, rotate the safety lock to Position 2, applying extra pressure for a firm hold.

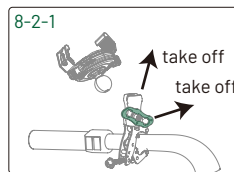


**Removing the Phone**

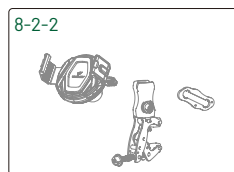
Reverse the steps: Rotate the safety lock to Position 0 to unlock. Remove the phone by gently releasing it from the jaws.  
 Note: Always ensure the phone is securely fastened before riding to avoid accidents.

**8-2: Dismount the phone holder**

8-2-1: Use the anti-theft handle to loosen the clamping arms and take off the phone holder. Remove the anti-theft handle for basic anti-theft function.

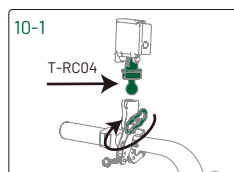


8-2-1: If you will not use the phone holder for a long time, use the anti-theft handle to loosen and remove whole HAWK1-PH08 from your motorcycle easily.

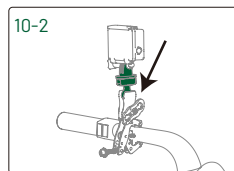
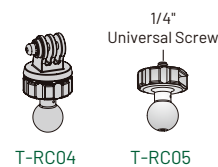


**10 Installation of an action camera**

10-1: Loosen the clamping arms and take off the phone holder. Add a quick-release ballhead at the bottom of the action camera. Mount the ballhead onto the clamping arms. Adjust the angle and use the anti-theft handle to tighten the clamping arms.



**Optional accessory**



**11 Safety Precaution**

- 11-1: Please follow the instruction in this user guide. Takeway® takes no responsibility for any man-made damage caused by improper installation and operation.
- 11-2: Please do not move your hands away from your device and the clampod before it is certain that the set is firmly clamped on the selected object, or your electronic device might fall and get damaged.
- 11-3: The clampod has excellent clamping force. To prevent any damage on the clamped object, please do not over tighten the clamp body.
- 11-4: Do not wipe the clampod and accessories with any volatile solvents (for example, kerosene and organic solvents such as paint thinners).
- 11-5: If the product is damaged or deformed due to falls or impact, please stop using the product immediately. The damage and deformation might compromise the clamping force and the mounted device could fall and get damaged.
- 11-6: A child aged under 12 operating the product should be accompanied by an adult.
- 11-7: For your safety, please do not use any electronic devices while driving a vehicle or riding a motorbike.

**12 Specifications of The Product**

<b>Model No. :</b>	HAWK2 (HAWK1)-PH08
<b>Materials :</b>	Aluminum alloys for aerospace applications, 304 stainless steel, POM, NBR
<b>Contents :</b>	Clampod body and Phone holder
<b>Capacity :</b>	Thickness: 1~32mm / Ø 10~32mm
<b>Weight :</b>	200g
<b>Height :</b>	Fits phones (with case) <small>If the phone thickness (including the phone case) is less than 12mm, please follow the manual carefully and install the accessories correctly before using.</small>
<b>Width :</b>	65mm-95mm wide,
<b>Depth :</b>	9mm to 15mm thick.

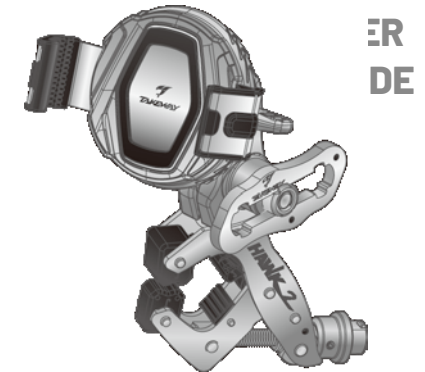
**13 The validity period of the standard limited warranty**

The standard limited warranty is valid for one year, from the original date of purchase for a consumer or a private purchaser (the warranty covers only the primary phone holder and does not include the attached accessories).

Please be aware of this condition and use the phone holder at your discretion.

This product is covered by product liability insurance. However, any personal injury and property damage caused by misuse of and physical abuse to the product is not covered, and Takeway® takes no responsibility for such injury and damage.

Please carefully read the product manual and correctly use the phone holder.



Before using the product for the first time, please carefully read through the user guide.

Please also make sure that you fully understand the content of the user guide and correctly use this product following the instructions.

More user guides in different languages  
<https://www.takewayglobal.com/download.htm>



All information described in this user guide is based on the test standard of Takeway®. We apologize for the inconvenience caused if there are any errors. The design and specifications of this product are subject to change without notice.

Copyright: All Rights Reserved

**EHOMA INDUSTRIAL CORPORATION**

TEL:+886-4-2406 5031  
 info@takeway.tw  
 www.takewayglobal.com